

Rohde&Schwarz Belgium

Your global EMC partner



For many years ROHDE & SCHWARZ has been a leading company in offering complete EMC solutions. This EMC application field even gained importance with the EMC Directive, and the growing market for wireless applications.

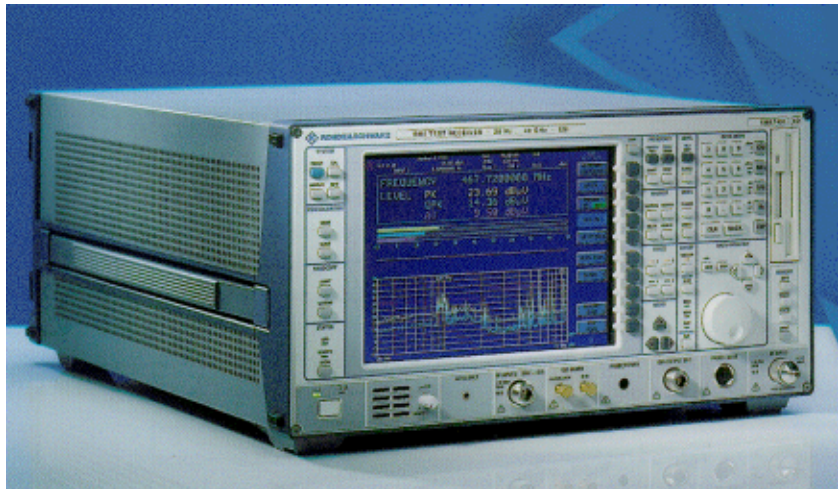
What Rohde & Schwarz Belgium can offer you as your EMC partner :

- Full compliant test equipment
- High performance test systems
- Completely integrated solutions
- Affordable pre-compliance packages
- Know-how and experience
- Training and consulting
- Pre and after sales support

Our EMC Product range

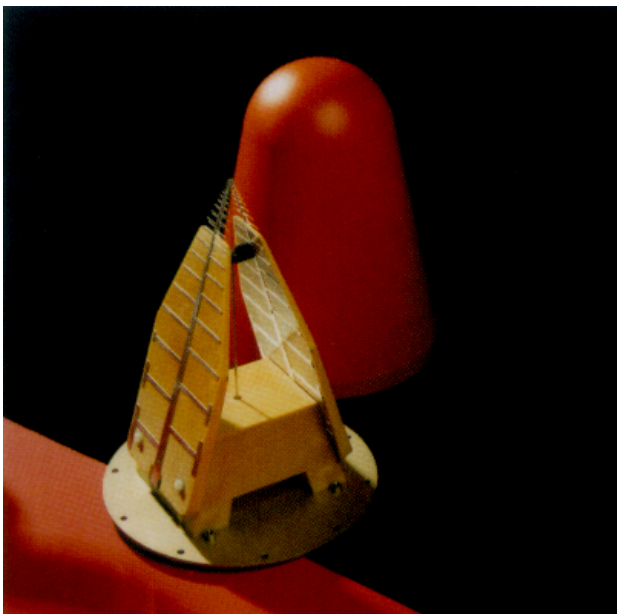
EMI Test Receivers

Test receiver family covering the frequency range from 5Hz to 110GHz, compliant to civil and military standards.



Antennas, Probes, Clamps, LISNs, Coupling networks

Individually calibrated antennas for radiated emission and immunity tests, and networks for conducted tests.

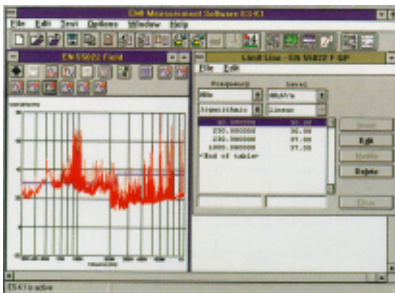


Broadband Power Amplifiers for EMS, Power amplifiers for immunity tests, up to several kW and GHz, from our partners Amplifier Research and Bonn.



Turnkey EMI and EMS Test Systems

For full compliance according any standard, with full automatic control of accessories like turntables, masts, etc... Highly modular and flexible solutions for any performance, fit for the future.



LF EMC Test Systems

Emission testing: Harmonics & Flicker.

Immunity testing: Power Fail Simulation, Magnetic Field, Interharmonics, ...

from our partner SPITZENBERGER+SPIES.

Shielded Enclosures, Compact Cells, and Anechoic Chambers

- Excellent performance
 - Modular concept
 - Any size
 - Any standard (CISPR, ETSI, MIL, Tempest, Automotive, ...)
- from our partner SIEPEL+HYFRAL.

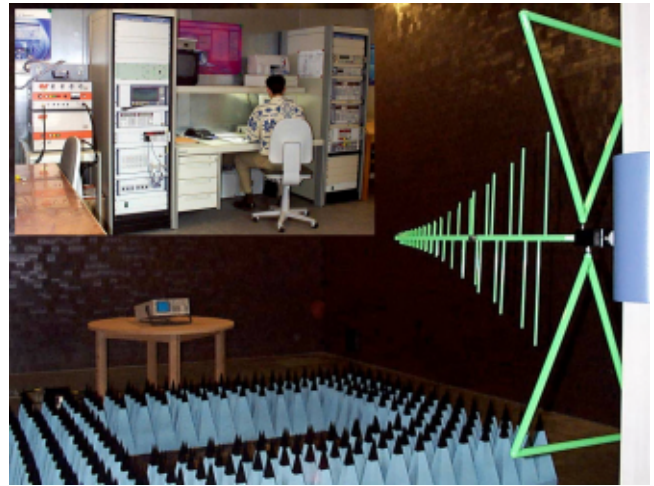
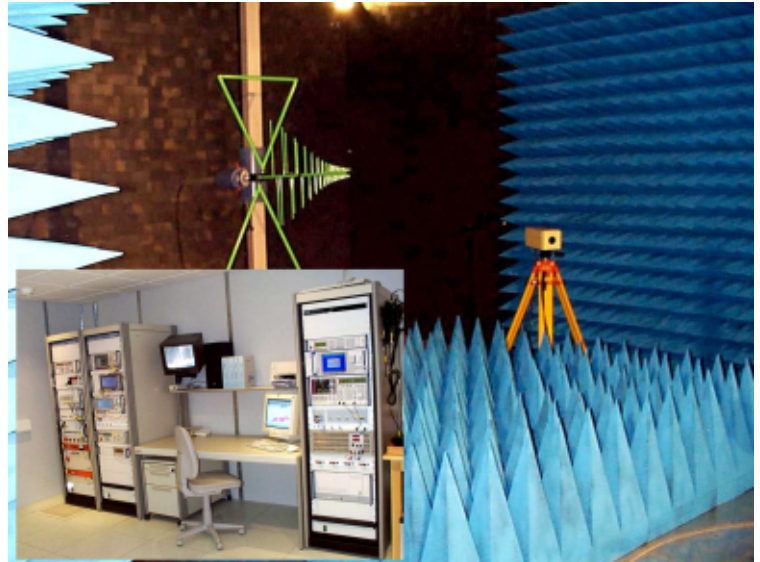
Precompliance EMI packages

Complete and budgetfriendly packages consisting of spectrum analyzers / precertification receivers, antennas, LISNs, Near Field Probes, Software, Installation and Training.



Turnkey EMC Solutions

Realisations of complete EMC facilities comprise detailed system engineering, design and project management, installation of the infrastructure and test systems, training and support. Over the last years, Rohde & Schwarz Belgium realized several turnkey EMC sites, at Belcomlab, Pioneer Electronics Manufacturing, SEE Luxembourg, University of Liège, etc.. Rohde & Schwarz Belgium is proud to be the major supplier of equipment, systems and/or infrastructure to the majority of EMC laboratories in Belgium.



ROHDE & SCHWARZ

ROHDE&SCHWARZ BELGIUM NV/SA · Excelsiorlaan 31 bus 1 · B-1930 Zaventem
Tel +32 2 721 50 02 · Fax +32 2 725 09 36 · e-mail: info@rsb.rohde-schwarz.com